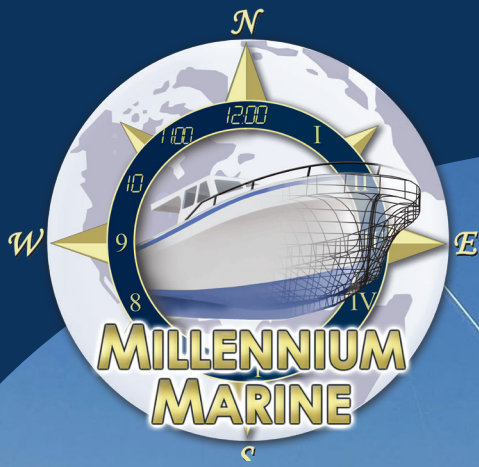


# DONELLE 35

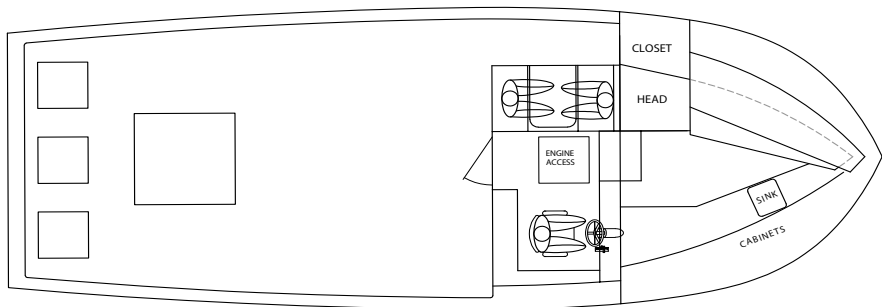
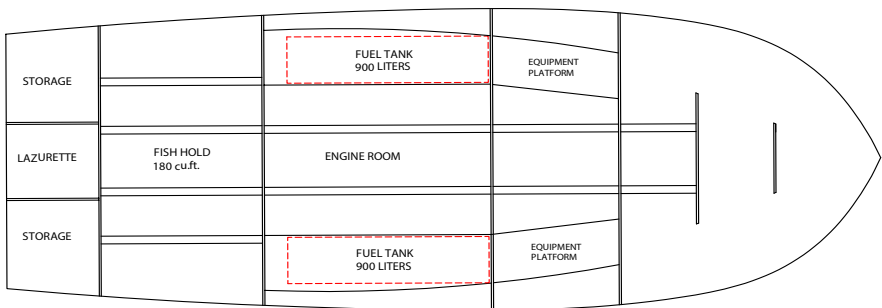
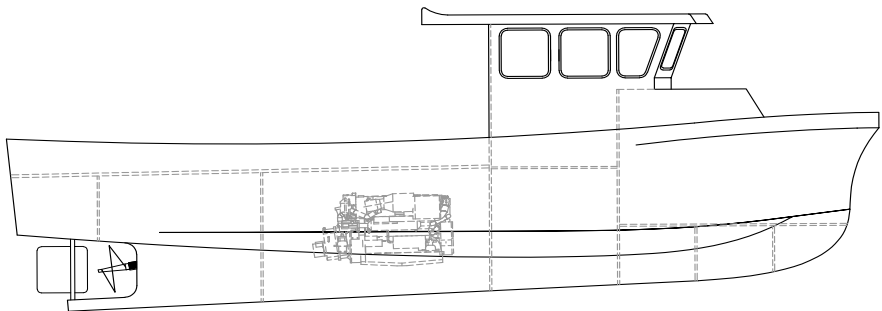


The "BIG" Little Boat! Available with either commercial or sport fish cabins, the Donelle 35 is known for its spacious cockpit.

For the lobstermen: Enjoy a fast and fuel-efficient ride without sparing too much deck space. With nearly 20' from transom to cabin wall is more deck than many 40' boats out there. The smaller commercial cabin makes for the perfect day boat still with enough area for a head, galley, settee, and berths for two.



# TECHNICAL SPECS



## DONELLE 35

LOA	34'-8'	Displacement	18,000 lbs
Beam	13'	Hold Capacity	100ft <sup>3</sup>
Transom	11'	Power	480HP
Draft	44"	Top Speed	26 knots
Fuel Capacity	1800 litres	Cruising Speed	20 knots
Sleeps	3 people	Fuel Consumption	1 NMPG

Specs may vary - each vessel is **CUSTOM BUILT**

[WWW.MMARINE.CA](http://WWW.MMARINE.CA)

(506) 778-9458

