

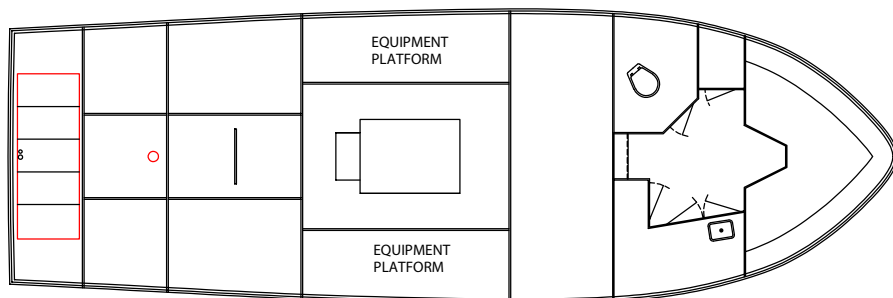
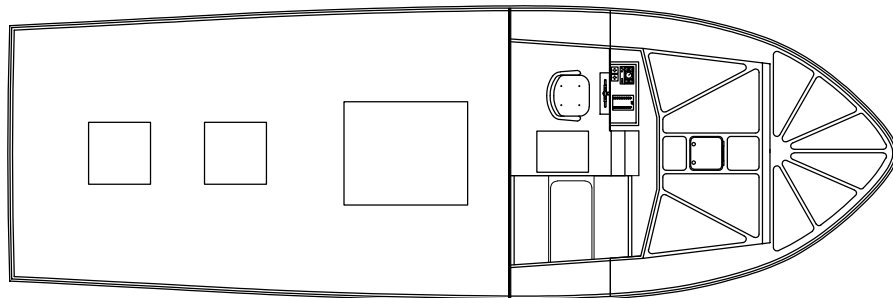
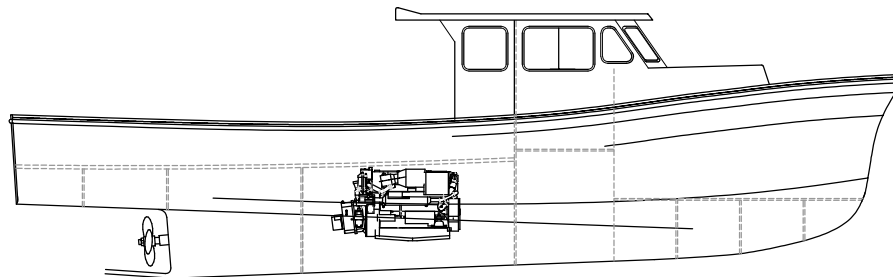
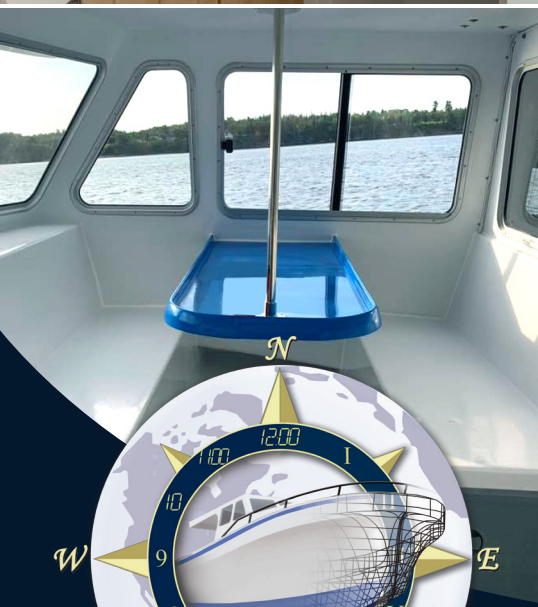
Hundreds have been sold throughout Canada and the U.S. since the mid 90's. In 2019, we raised the freeboard allowing for deeper fish holds and a larger engine to be installed under a flush deck.

We have also modified the cabin giving it a “**new look**”!

The Donelle 43, known for its fuel efficiency at a 16-20 knot cruise, is the ultimate day boat. Now with deeper holds, it also appeals to commercial tuna fishermen, salmon gillnetters, and other applications where speed and fuel consumption are of concern.

Where most builders have gone to wider hulls, the Donelle 43 still possesses the traditional proportions with a 14' 6" beam tapering to 12' 2" at her transom.

TECHNICAL SPECS



DONELLE 43

LOA	42'-10"	Displacement	26,000 lbs
Beam	14'-6"	Hold Capacity	120 ft ³
Transom	12'-2"	Power	510HP
Draft	48"	Top Speed	21 knots
Fuel Capacity	900 litres	Cruising Speed	17 knots
Sleeps	4 people	Fuel Consumption	1 nmpg

Specs may vary - each vessel is **CUSTOM BUILT**

WWW.MMARINE.CA

(506) 778-9458

