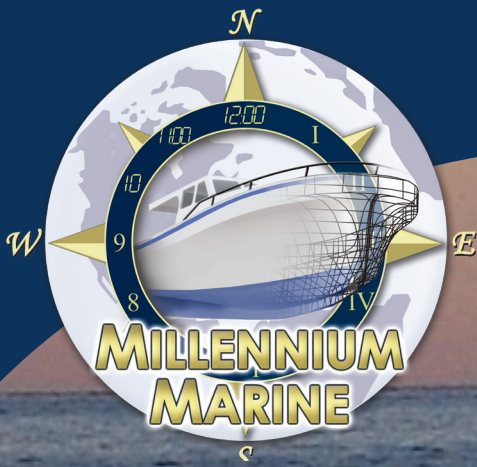


# MILLENNIUM 45

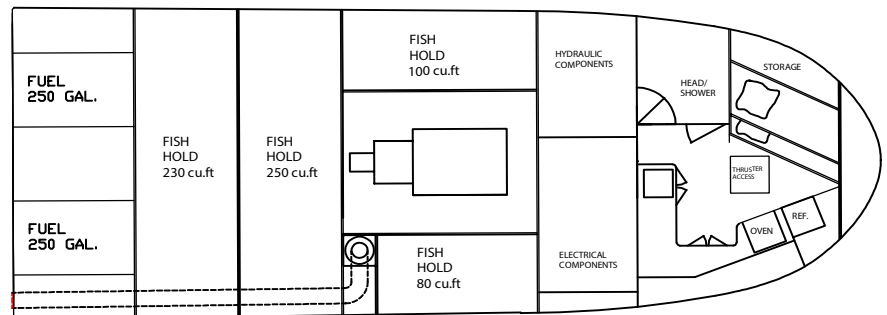
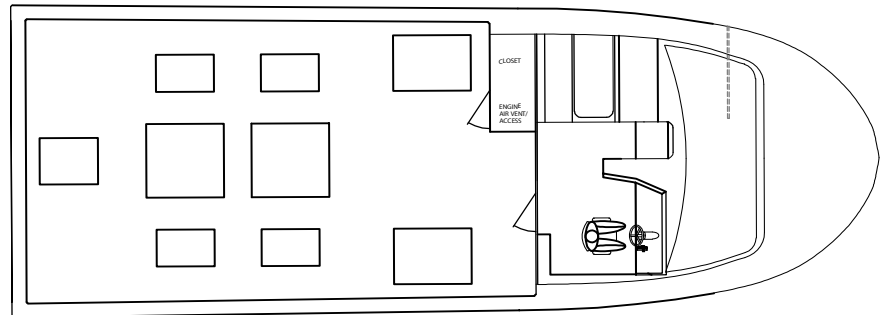
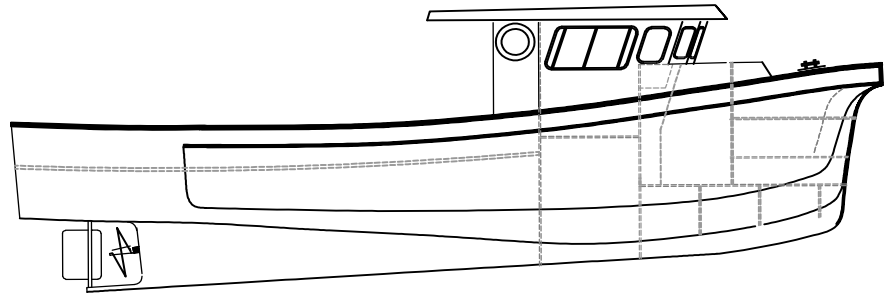
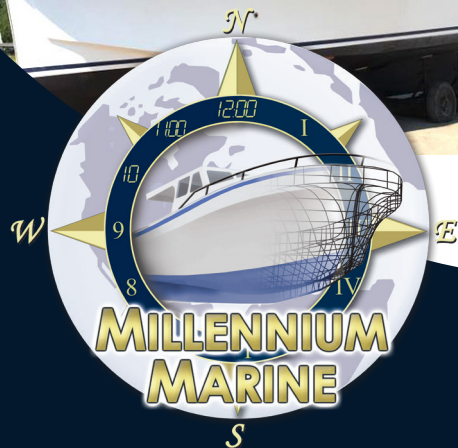
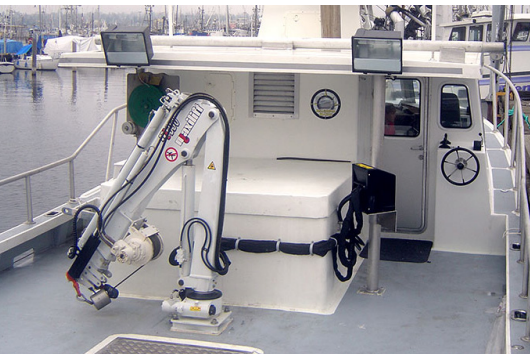


Whether used for commercial fishing, other commercial applications, sport fishing, or pleasure. When busting through the waves at 20+ knots or sitting like a duck... Other boaters will envy!

On all new builds, the process starts with a general arrangement drawn with your specific needs in mind.

Unfortunately for the builder, no two are the same!

# TECHNICAL SPECS



## MILLENNIUM 45

|               |             |                  |                    |
|---------------|-------------|------------------|--------------------|
| LOA           | 44'-11"     | Displacement     | 34,000 lbs         |
| Beam          | 16'-0"      | Hold Capacity    | 750ft <sup>3</sup> |
| Transom       | 15'-6"      | Max Power        | 800HP              |
| Draft         | 54"         | Top Speed        | 28 knots           |
| Fuel Capacity | 2000 litres | Cruising Speed   | 18 knots           |
| Sleeps        | 6 people    | Fuel Consumption | 0.7 NMPG           |

Specs may vary - each vessel is **CUSTOM BUILT**

[WWW.MMARINE.CA](http://WWW.MMARINE.CA)

(506) 778-9458